

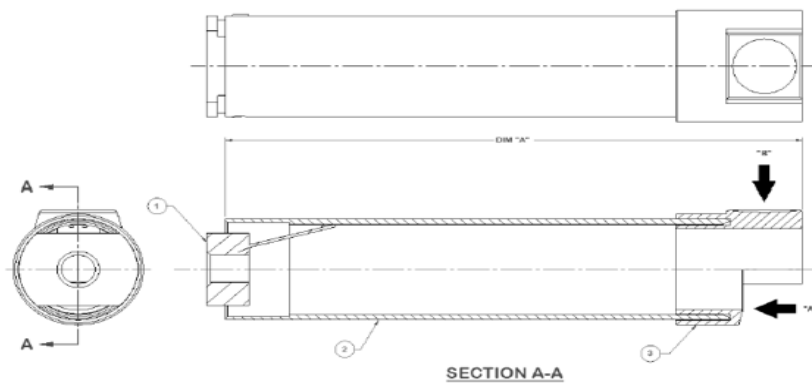
Product Name: Locking Tubes For Gas Springs

Product Description:

AVM supply different styles of locking mechanisms but the most common is the spring loaded tube that pivots under the gas spring to prevent it from being compressed – see the illustration above.

The mechanism automatically locks the gas spring in the fully extended position and to release the operator pushes the locking tube back to the mid-position that allows the gas spring to be compressed.

Each locking tube is specific to the gas spring it is being used with; variables include the diameter and length. The following sizes are standard for AVM – if you do not see what you need please contact your local sales/engineering representative.



AVM P/N	DIM "A" mm
PC2052-2	153.0
PC2052-3	223.0
PC2052-5	186.0
PC2052-6	190.0
PC2052-7	178.0
PC2052-8	140.0
PC2052-9	223.0
PC2052-10	173.0



Custom Locking Mechanisms

AVM also manufactures customer specific designs per the mechanism below for Bobcat skid steers.

In this application we use a spring loaded fork bolt that prevents the gas spring from being compressed after it has reached its fully extended position. The fork bolt is depressed by the operator to release the gas spring and allow it to close. The major advantage to this design is that it can carry much higher loads than the simple spring loaded tube design.

AVM will design and manufacture locking mechanisms to customer requirements.